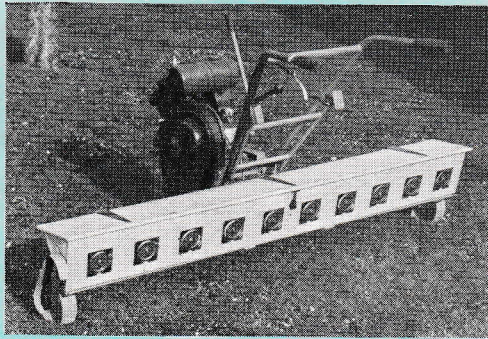


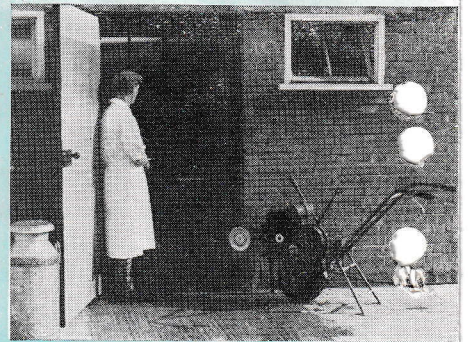
ATTACHMENTS TO COLWOOD MACHINES



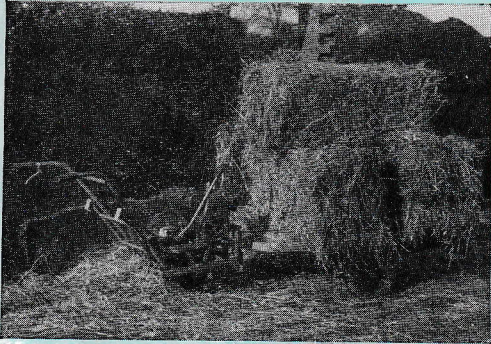
Model B, showing "Tarpen" Hedge Trimmer in action.



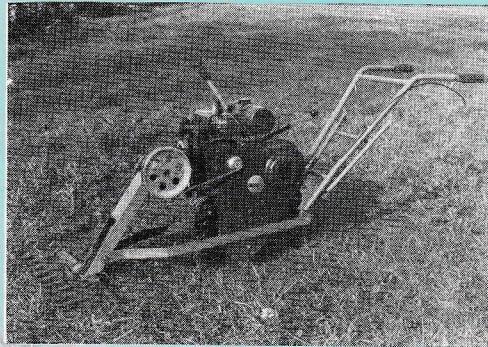
The Warfield-Colwood Seed Broadcaster.



Colwood Pump for washing your dairy



A good 5 cwt. load on Colwood Truck.



Cutter Bar attached. Model "B."

THE *Whitwood* SEED DRILL

The "Whitwood" is designed to sow continuously.

Adjustment of the seed flow regulator plate enables the "Whitwood" to be adapted for sowing all sizes of seed, from very small ones, such as lettuce, up to and including peas and beet (a special brush is provided for use when drilling peas.)

Marker weight mounted on marker arm ensures parallel drilling with infinitely variable settings up to 24 ins.

Special attachments available enabling the "Whitwood" to be easily adapted for spreading artificial fertilisers.



MANUFACTURED BY
DASHWOOD
ENGINEERING LTD.
LONDON · S.E.20
TEL. SYDENHAM 5161/3