

# Landmaster L120

## Operating Instructions

ML1000

### LANDMASTER ROTARY CULTIVATOR

**IMPORTANT!** STUDY THIS BOOK AND THE ENGINE MAKERS' LITERATURE AND ATTEND TO PRELIMINARY SERVICING OF THE ENGINE AND MACHINE BEFORE USING FOR THE FIRST TIME.

NOTE: The terms Left Hand (L.H.) and Right Hand (R.H.) used in this handbook are as viewed from the Operator's position.

### CONTENTS

MAIN FEATURES ... .. 1	CHAINCASE ... .. 5
MAINTENANCE & LUBRICATION ... .. 2	HANDLEBARS ... .. 6
STARTING & OPERATING ... .. 2	ROTOR PARTS ... .. 7
ROTARY CULTIVATION ... .. 3	FAULT FINDING ... .. 8
MAIN FRAME ... .. 4	WHEELS ... .. 8-9
	RIDGING ... .. 10-11

**GUARANTEE:** No statement of representation in this handbook, as a guide to the owner or user, shall be construed as enlarging or varying the Terms of Guarantee which are as stated on the Guarantee Card, issued with the machines.

The Guarantee Terms are applicable only to the first owner/user. Use for Hire or Contract Work will render the Guarantee void.

### MAIN FEATURES

This pedestrian controlled light tractor allows three distinct forms of powered operation:

- 1 Powered Rotary Cultivation, with drive direct to the rotor; or
- 2 Powered traction by wheels on the rotor shaft for ploughing or trailer work or for rotary grass cutting etc. See separate instruction for Ploughing and Rotary Grass cutting.
- 3 Power take-off to some attachments; either with or without traction

The main engine features should be identified and located from the Engine Makers literature supplied with each machine. A new owner should familiarise himself with such points as: air filter, fuel tank, fuel cock, carburettor, starter, engine stop, oil sump filler plug, spark plug, etc. etc.

Power is transmitted, via a 'Vee' belt, from the engine to a large diameter pulley atop the totally enclosed chain-case. This oil filled chain-case incorporates fixed reduction sprockets and heavy-duty drive chains.

The drive may be engaged or disengaged by means of a clutch lever conveniently located on the handlebars. Operation of the clutch lever controls a Jockey (Idler) Pulley which tensions or releases the 'Vee' belt to give either a tightly tensioned (driving) belt or a slack (de-clutched) slipping belt. The clutch lever has a spring-loaded plunger device to facilitate 'hold' in the engaged position for long runs.

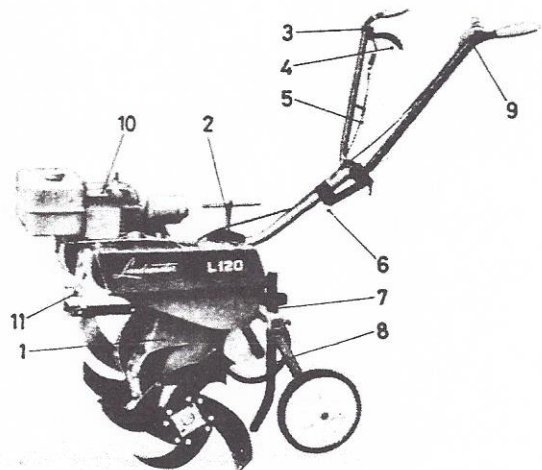
The engine has a built-in speed governor so that a speed once set at the throttle lever should be automatically maintained whether the engine is 'on' load or 'off' load.

The handlebars can be set to any comfortable working height by sliding and fixing the handlebar clamp on the central support tube. The centre lever allows the handlebars to be swung sideways and locked to right or left of the machine's centre-line, thus permitting the operator to tread clear of the tillage path. For storage purposes the handlebars can be folded flat by removing the locking pin on the linkage.

A shorting tab adjacent to the engine spark plug is used to stop the engine. When a trailer attachment is used on Home Market machines, an additional cut-out switch must also be fitted on the handlebars, close to the operator.

A hitch point at the rear of the machine is used for attaching various ancillaries as well as the support-frame which carries two transport/stabilising wheels and a depth skid for cultivation purposes. See 'Rotary Cultivation' for greater details.

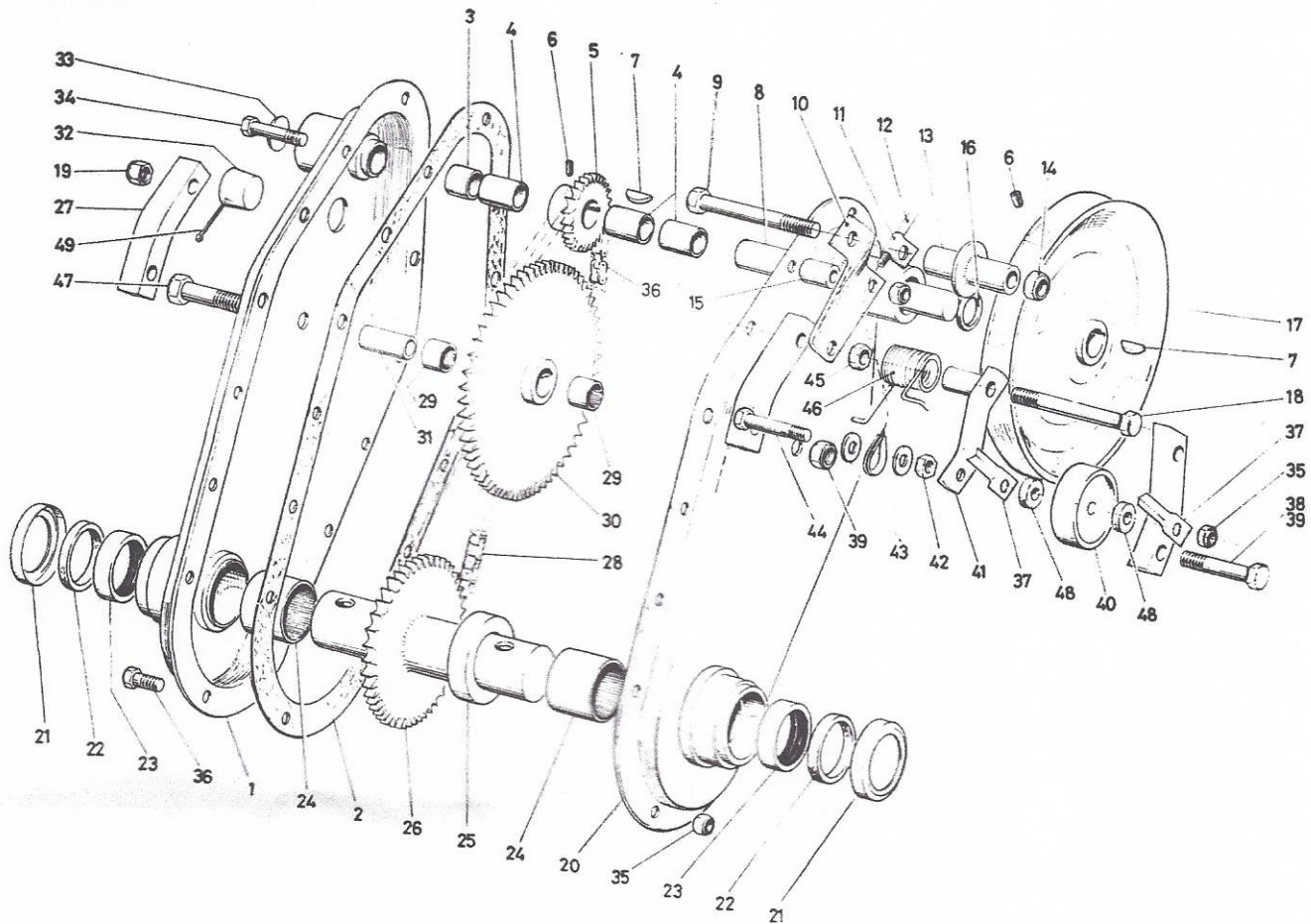
Many built-in safety features have been incorporated, such as belt guards, stopping devices, etc., and in these and other respects the machine complies fully with current U.K. Agricultural Safety Regulations.



KEY:

1 Chain Case	6 H/Bar Height Adj'nt.
2 H/Bar Side-swing Adj'mt.	7 Support Frame
3 Clutch Lever 'Hold'	8 Rear Skid
4 Clutch Lever	9 Throttle Lever
5 Clutch Cable Adj'nt.	10 Ignition Shorting Tab
	11 Engine Sump Filler Plug

**CHAINCASE**



**SPARE PARTS**

Item No.	Spares No.	Description	Qty.	Item No.	Spares No.	Description	Qty.
1	ML1016	Chaincase Unit Comprising:		25	ML1505	Sprocket Spacer	1
2	ML1002	R.H. Chaincase	1	26	ML1014	Rotor Axle Ass'y	1
3	A2937	Glacier Bush 2004.WB.1008	1	27	ML1503	Chain-case Spacers	4
4	A2936	Glacier Bush 2007.WB.1014	3	28	A2768	Chain 1/2" Pitch—46 Pitches	1
5	ML1004	Input Sprocket	1	29	A2779	Needle Bearings	2
6	A2152	1/2" UNF x 1/2" Grub Screw. K.C. Point	2	30	ML1005	Intermediate Sprocket	1
7	A1375	Woodruff Key No. 505	2	31	A2780	Bearing Inner Race	1
8	ML1506	Input Shaft	1	32	ML1544	Oil Filler Plug	1
9	A2777	3/8" UNF x 3 1/2" Bolt	1	33	A2769	Core Plug	1
10	ML1562	Belt Cover Bracket	1	34	A1587	1/2" UNF x 1 3/8" Bolt	1
11	ML1554	Clutch Cable Clip	1	35	B1582	1/2" UNF Nyloc 'T' Nut	13
12	ML1023	Clutch Cable	1	36	A2767	Chain 3/8" Pitch—56 Pitches	1
13	ML1103	Belt Cover Spacer Ass'y	1	37	ML1548	Jockey Guide Plates	2
14	A2115	3/8" UNF Plain Nut	1	38	A2770	5/16" UNF x 2 1/8" Bolt	1
15	ML1563	Bracket Spacer	1	39	A1728	5/16" UNF Nyloc 'P' Nut	2
16	A2782	INA Bearing Seal—GSC.10	1	40	ML1020	Jockey Pulley	1
17	ML1003	Chaincase Pulley	1	41	ML1007	Jockey Pulley Arm	1
18	A2772	5/16" UNF x 3 3/8" Set Screw	1	42	A1695	1/2" UNF Lock Nut	1
19	B1583	5/16" UNF Nyloc 'T' Nut	1	43	A171	1/2" Plain Washer	2
20	ML1001	L.H. Chaincase	1	44	A2942	1/2" UNF x 2" Bolt	1
21	ML1540	Axle Bearing Cap	2	45	A2056	5/16" UNF Plain Nut	1
22	ML1539	Felt Seal	2	46	ML1524	Jockey Torsion Spring	1
23	A2781	Oil Seal—Superfect 760	2	47	A2211	5/16" UNF x 2" Bolt	1
24	A2928	Needle Bearing—INA SC2106	2	48	ML1546	Felt Washer	2
				49	A1051	Split Pin 3/32" x 1/2"	1

WHEN ORDERING SPARES, STATE SPARES No., DESCRIPTION, QUANTITY REQUIRED AND MODEL SERIAL No.

**OBTAIN ALL SPARE PARTS FROM YOUR LOCAL DEALER**

# **Landmaster Limited**

Factories, Home and Export Sales, Spares and Service  
**STERTE ROAD POOLE DORSET BH15 2AF ENGLAND**  
Telephone Poole 5141                      Telex 41224



A member of the Firth Cleveland Group



LM1040/1000/3-73 C.P.